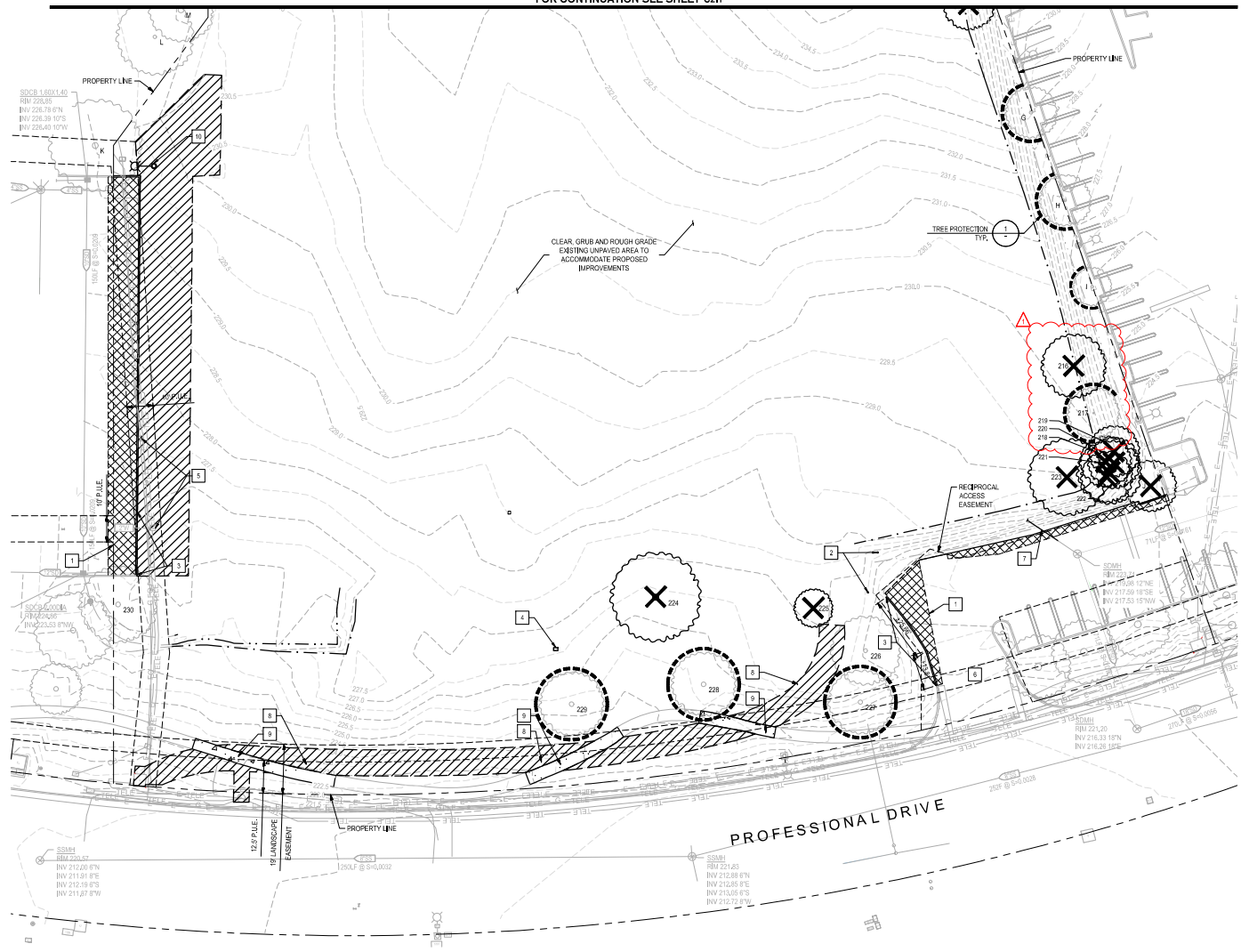


FOR CONTINUATION SEE SHEET C2.1



NOTES

1. PRIOR TO COMMENCEMENT OF GRADING ACTIVITIES, THE CONTRACTOR SHALL HAVE THE EXISTING DRY UTILITIES POT HOLES FOR VERIFICATION OF LOCATION AND DEPTH AT SUCH TIME. POT HOLE DATA SHALL BE PROVIDED TO THE ENGINEER FOR DETERMINATION OF ADEQUATE CLEARANCE AND SEPARATION.
2. ALL EXCAVATIONS SPILLS, INCLUDING, BUT NOT LIMITED TO CONCRETE AND PAVEMENT EXCAVATION, SHALL BE EXPORTED AND DISPOSED OF BY THE CONTRACTOR.
3. EXISTING STRUCTURES, CONCRETE, PAVEMENT, FENCES, CURBS, UTILITY BOXES, LIGHTS, GATES, ETC. NOT CALLED OUT IN PLANS TO BE REMOVED OR DEMOLISHED SHALL BE PROTECTED IN PLACE.
4. BOLD ITEMS TO BE REMOVED.
5. CONTRACTOR TO COORDINATE WITH CITY OF ROSEVILLE THE TIMING OF THE STORM DRAIN LINE REMOVAL AND CONSTRUCTION AS TO NOT DISRUPT SERVICE.
6. TREE PROTECTION TO BE IN ACCORDANCE WITH TREE PRESERVATION SPECIFICATIONS FROM ARBORIST REPORT DATED MARCH 3, 2021.

LEGEND

- REMOVE AND DISPOSE OF EXISTING CONCRETE. REMOVAL DEPTH SHALL ACCOMMODATE DEPTH OF PROPOSED IMPROVEMENTS
- REMOVE AND DISPOSE OF EXISTING LAWN AND CAP IRRIGATION LINES
- SAWCUT, REMOVE, AND DISPOSE OF EXISTING ASPHALT PAVEMENT, REMOVAL DEPTH SHALL ACCOMMODATE DEPTH OF PROPOSED IMPROVEMENTS
- REMOVE AND DISPOSE OF EXISTING TREE, STUMP, & ROOTS
- TYPICAL TREE PROTECTION PER DETAIL 1 ON SHEET C2.0

KEY NOTES

- 1 SAWCUT, CONCRETE SAWCUTS SHALL BE PERFORMED AT THE NEAREST RELIEF JOINT. ALL SAWCUTS SHALL BE A NEAT CLEAN LINE.
- 2 REMOVE AND DISPOSE OF EXISTING BOLLARD AND FOOTING
- 3 REMOVE AND DISPOSE OF EXISTING CONCRETE CURB
- 4 REMOVE AND DISPOSE OF EXISTING IRRIGATION CONTROL VALVE
- 5 ADJUST VALVE BOX TO GRADES, SEE GRADING PLAN
- 6 MAINTAIN ENTRY AND EXIT TO ADJACENT PARKING LOT DURING DEMOLITION AND CONSTRUCTION OF PROJECT
- 7 REMOVE AND DISPOSE OF EXISTING STORM DRAIN LATERAL
- 8 EXISTING LANDSCAPE WILL BE DEMOLISHED DURING INSTALLATION OF PROPOSED ELECTRICAL CONDUITS, CONTRACTOR TO REPAIR AND RESTORE EXISTING LANDSCAPE, SEE L2.2 PLANS FOR ADDITIONAL INFORMATION
- 9 EXISTING CONCRETE WALKWAY WILL BE DEMOLISHED DURING INSTALLATION OF PROPOSED ELECTRICAL CONDUITS, CONTRACTOR TO REPAIR AND RESTORE CONCRETE WALKWAY
- 10 REMOVE AND RELOCATE EXISTING LIGHT POLE, SEE SHEET C2.0 FOR LOCATION

811
Know what's below.
Call before you dig.

NOTES

1. ALL EXISTING UTILITIES WERE PLOTTED FROM RECORD INFORMATION AND HELD TOPOGRAPHY. ACTUAL LOCATIONS MAY VARY AND UTILITIES CROSSINGS MAY OBTAIN IN THE FIELD. IT IS IMPERATIVE THAT ALL LOCALITIES SERVICES LOCATE AND MARK EXISTING UTILITIES PRIOR TO THE START OF EXCAVATION.
2. THE CONTRACTOR SHALL USE EXTREME CAUTION WHEN EXPOSING EXISTING UTILITY CROSSINGS AND SERVICES.
3. ANY DAMAGE TO EXISTING UTILITIES WILL BE THE SOLE RESPONSIBILITY OF THE CONTRACTOR.



SIEGFRIED
900 Howe Ave., Suite 200
Sacramento, CA 95825
916-450-0777
www.siegfriedeng.com

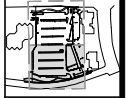
- CIVIL
- STRUCTURAL
- LANDSCAPE ARCHITECTURE
- SURVEYING



REVISIONS

No.	Date	Description
1	6/8/2021	PLANNING DEPARTMENT BC #2

KEY MAP



PROJECT
KAISER PERMANENTE ROSEVILLE TEMPORARY PARKING LOT
2135 DOUGLAS BLVD., ROSEVILLE, CA 95661

CW# TBD
BD# TBD
EN# TBD

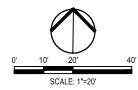


DATE SIGNED: 06/08/21

SHEET TITLE

TOPOGRAPHY AND DEMOLITION PLAN II

Proj Mgr: PJS
Drawn by: RRQ
Date: 6/8/2021
Job No.: 20110
SHEET: **C2.2**



C:\3000\30110\Boulder\Boulder_Temporary_Parking_Lot\Plan_and_Demolition\Demolition_Plan_II.dwg - 6/8/21

20200818 PLANNING DEPARTMENT BC#2